

OFFICE FOR LEASE
STONY POINT I

9030 STONY POINT PKWY
RICHMOND, VIRGINIA 23235



OWNED BY:



MANAGED AND LEASED BY:



UNDER NEW
OWNERSHIP

PROPERTY HIGHLIGHTS



ONE SUITE AVAILABLE



New Ownership, Same great quality and service



Polished granite and reflective glass exterior



Amenities include a Take 5 Market and Spark Conference Center in the adjacent office building



Storage space available for lease within the park



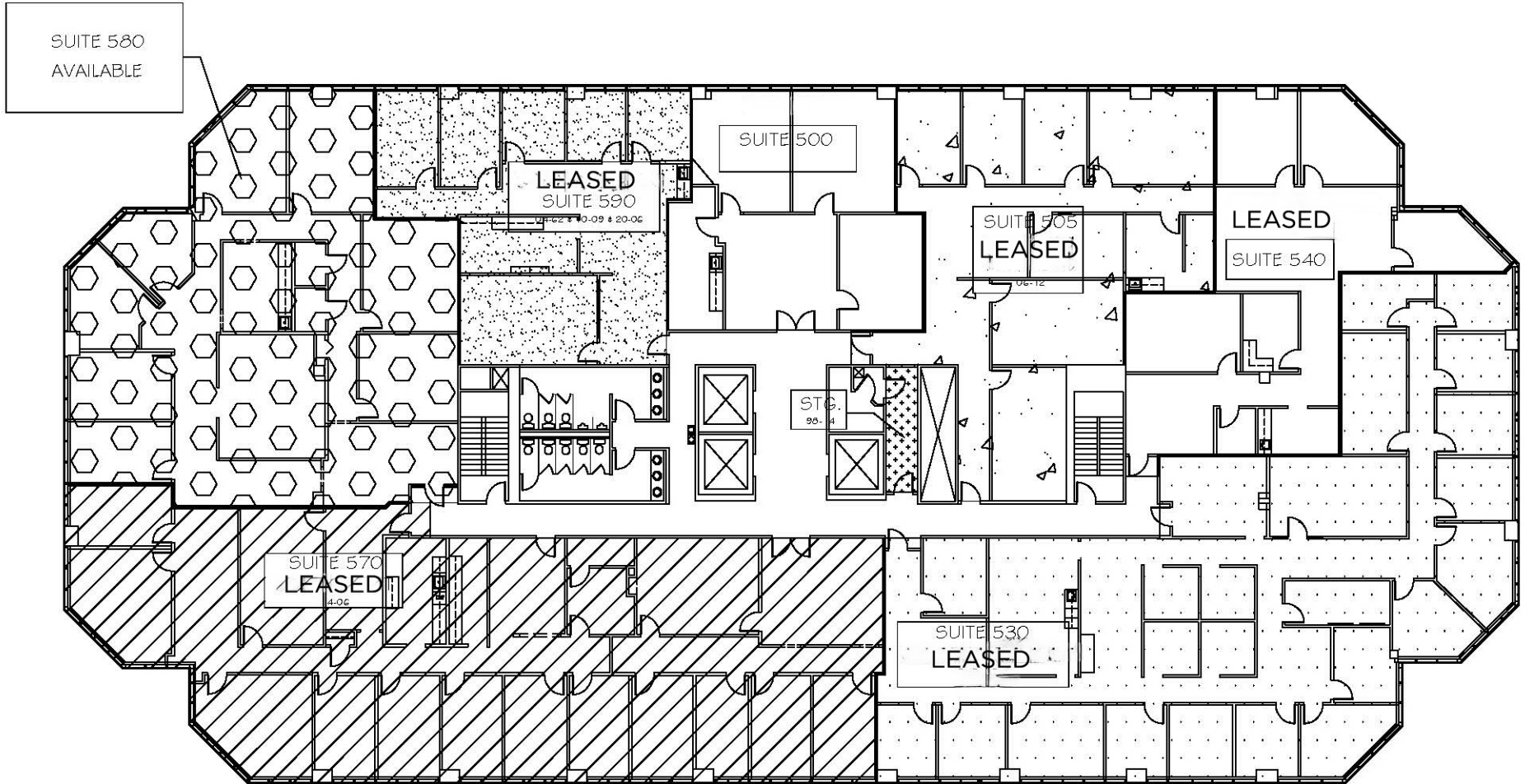
Outdoor patio conducive to remote work and restorative practices



Direct access to the Parham-Chippenham parkway



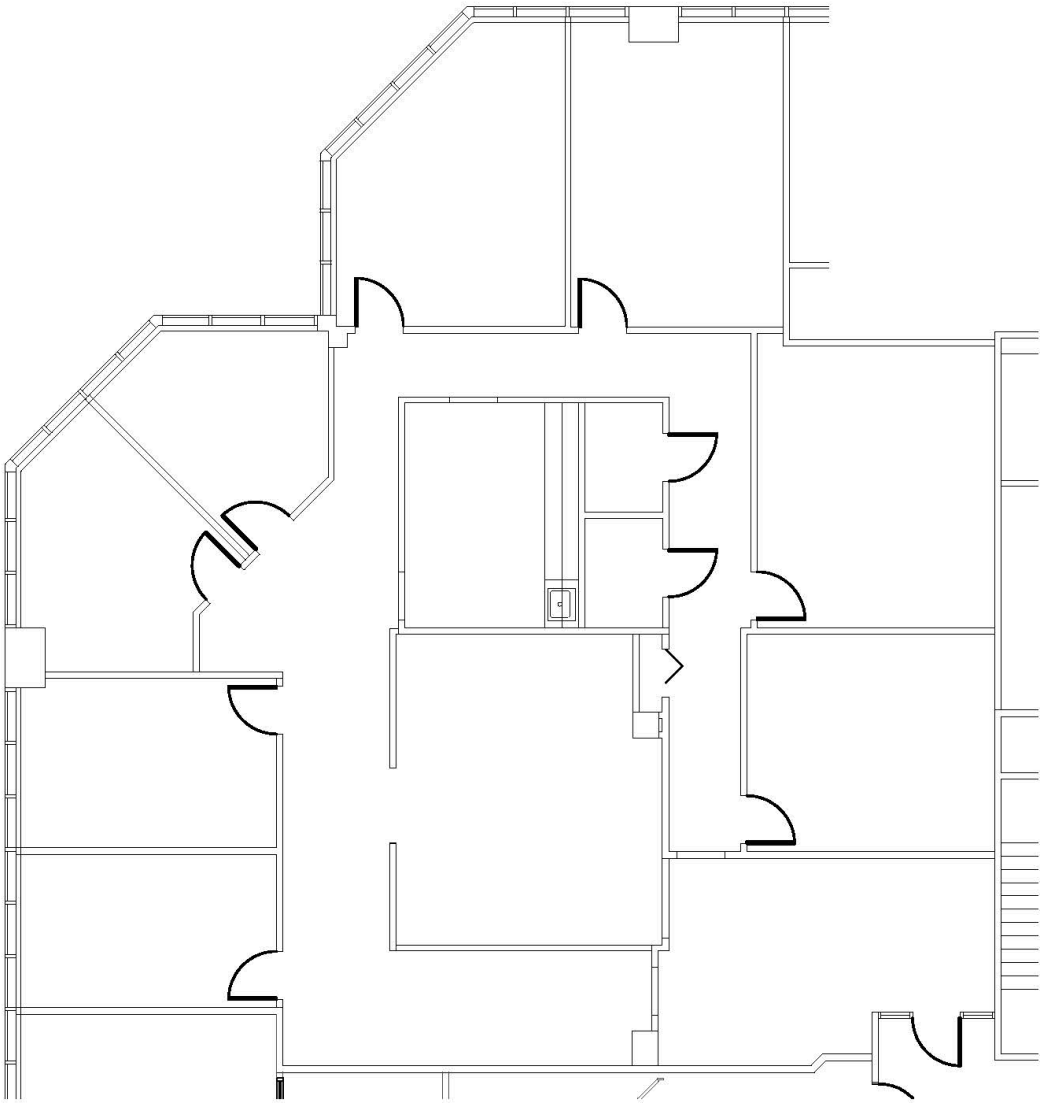
FIFTH FLOOR



AVAILABLE SPACES

Suite 580 - 3,792 SF

Available Now





KRISTIE INGE
Senior Vice President
804 554 3563
kristie.inge@thalhimer.com

OWNED BY:



MANAGED AND LEASED BY:



Independently Owned and Operated / A Member of the Cushman & Wakefield Alliance

Cushman Wakefield | Thalhimer © 2026. No warranty or representation, express or implied, is made to the accuracy or completeness of the information contained herein, and same is submitted subject to errors, omissions, change of price, rental or other conditions, withdrawal without notice, and to any special listing conditions, imposed by the property owner(s). As applicable, we make no representation as to the condition of the property (or properties) in question.

OFFICE FOR LEASE
STONY POINT II

9020 STONY POINT PKWY
RICHMOND, VIRGINIA 23235



OWNED BY:



MANAGED AND LEASED BY:



UNDER NEW
OWNERSHIP

PROPERTY HIGHLIGHTS



SEVERAL SUITES AVAILABLE



New Ownership, Same great quality and service



Spark Conference Center and collaborative common space equipped with WIFI and outdoor seating



Take 5 Market



Direct access to the walking and biking trails connecting to the Larus Park system



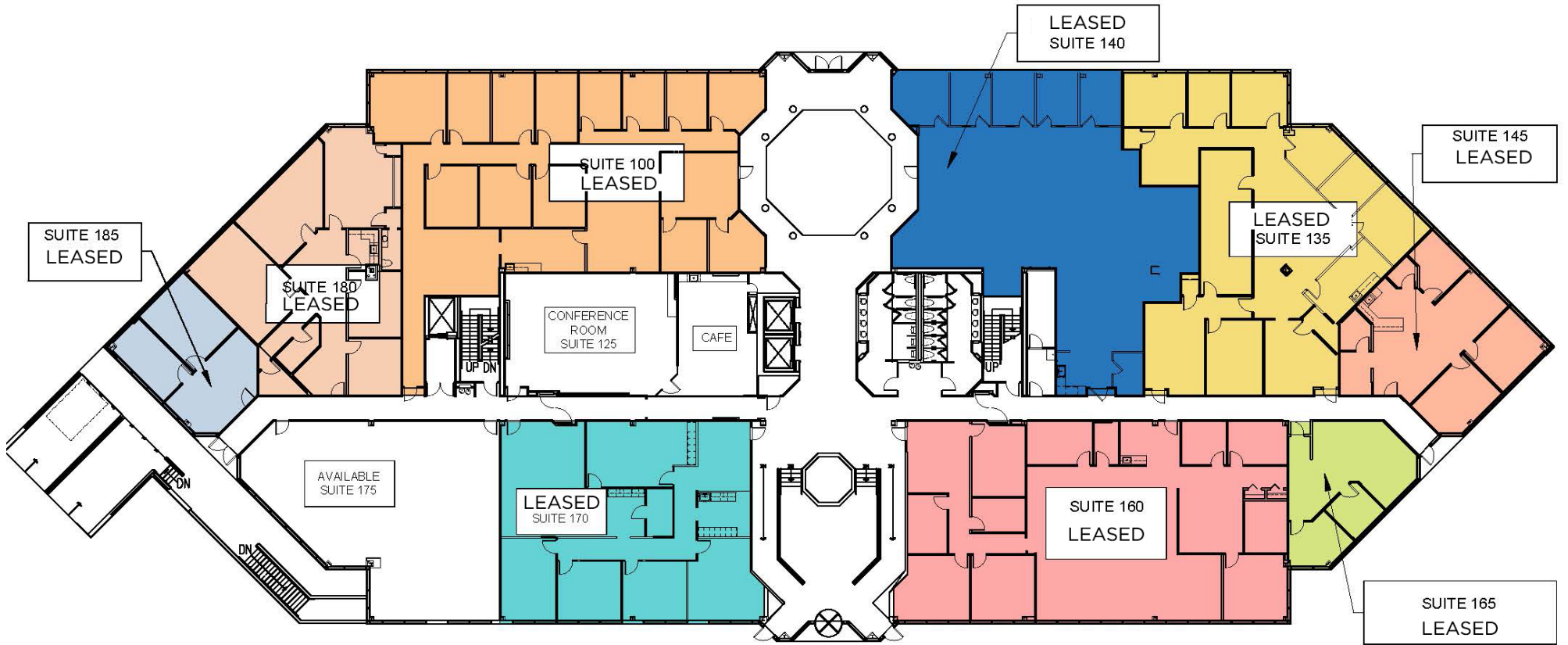
Front patio with seating and fountain



Storage space available within the buildings

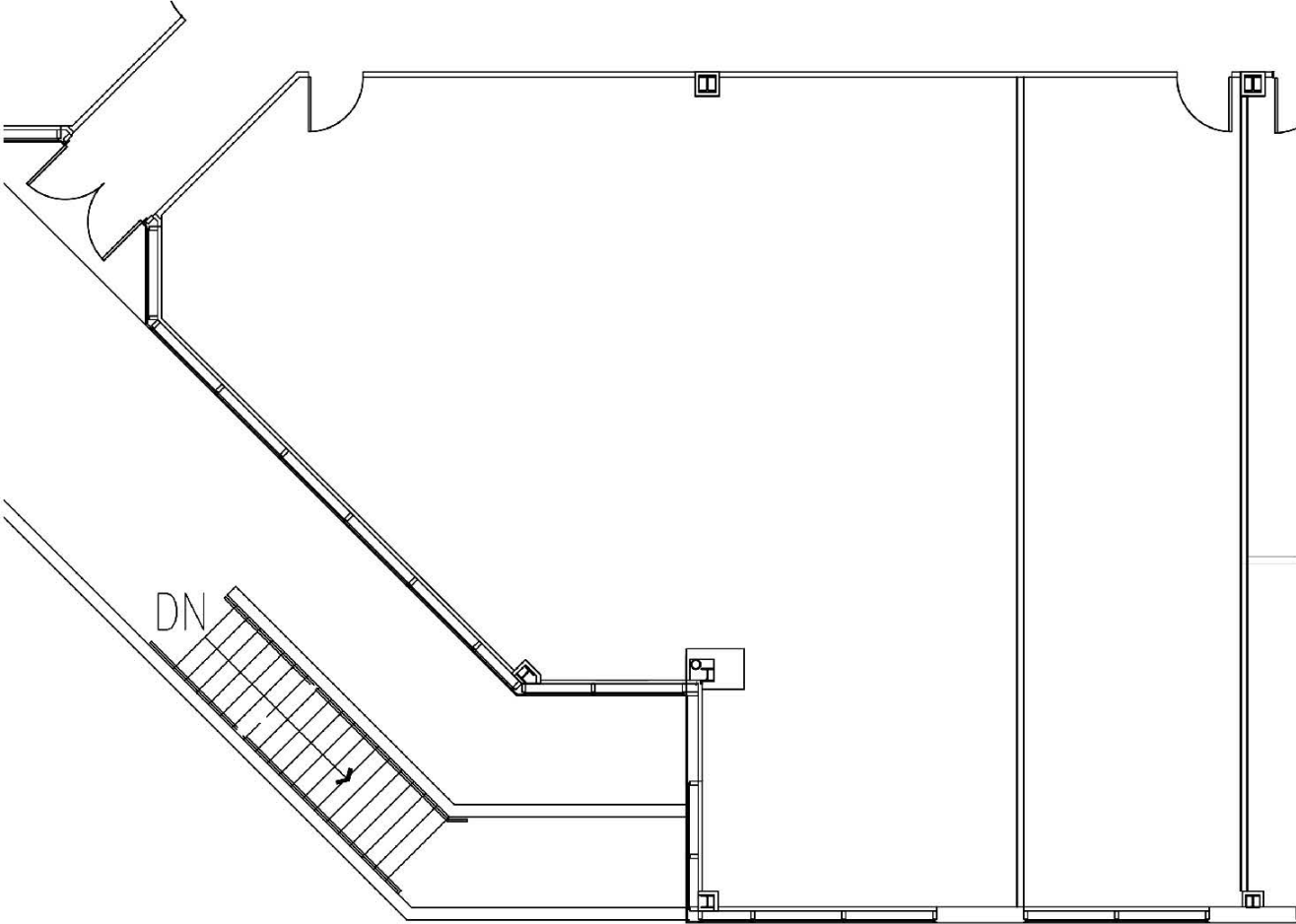


FIRST FLOOR

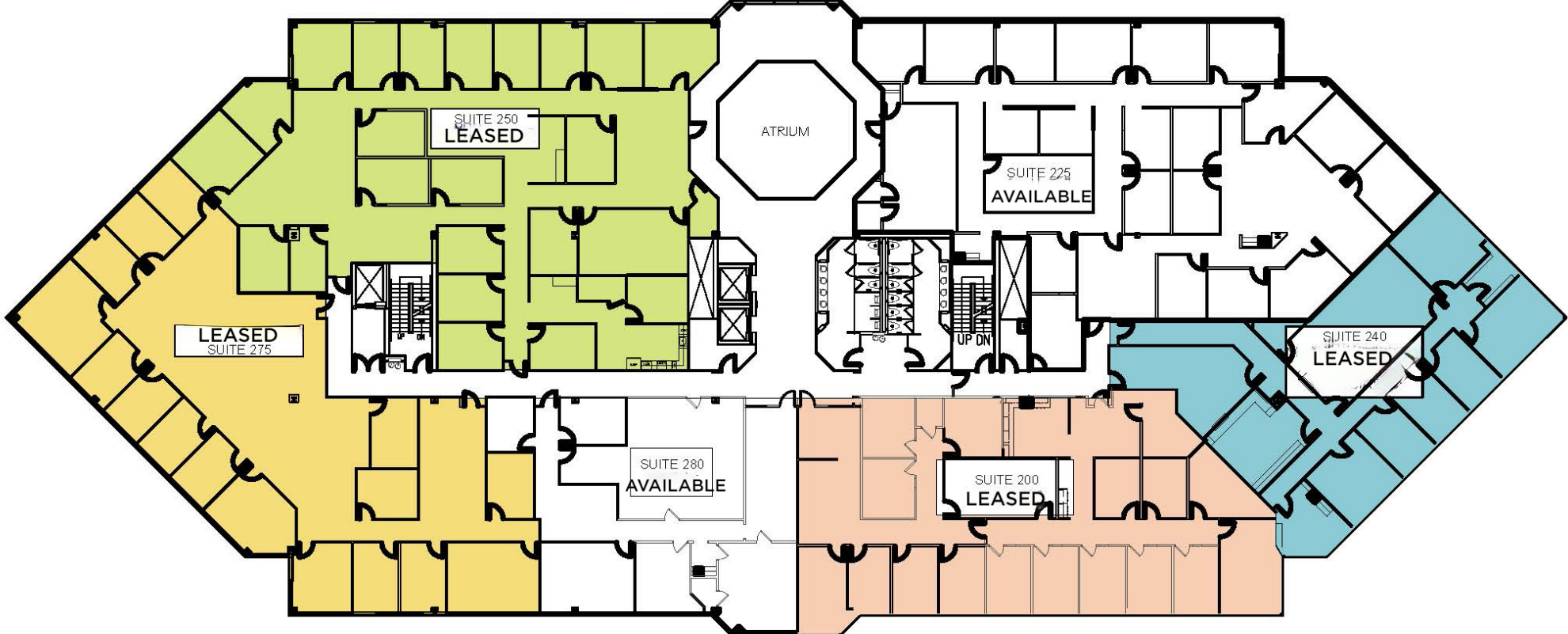


AVAILABLE SPACES

Suite 175 - 2,507 SF
Available Now



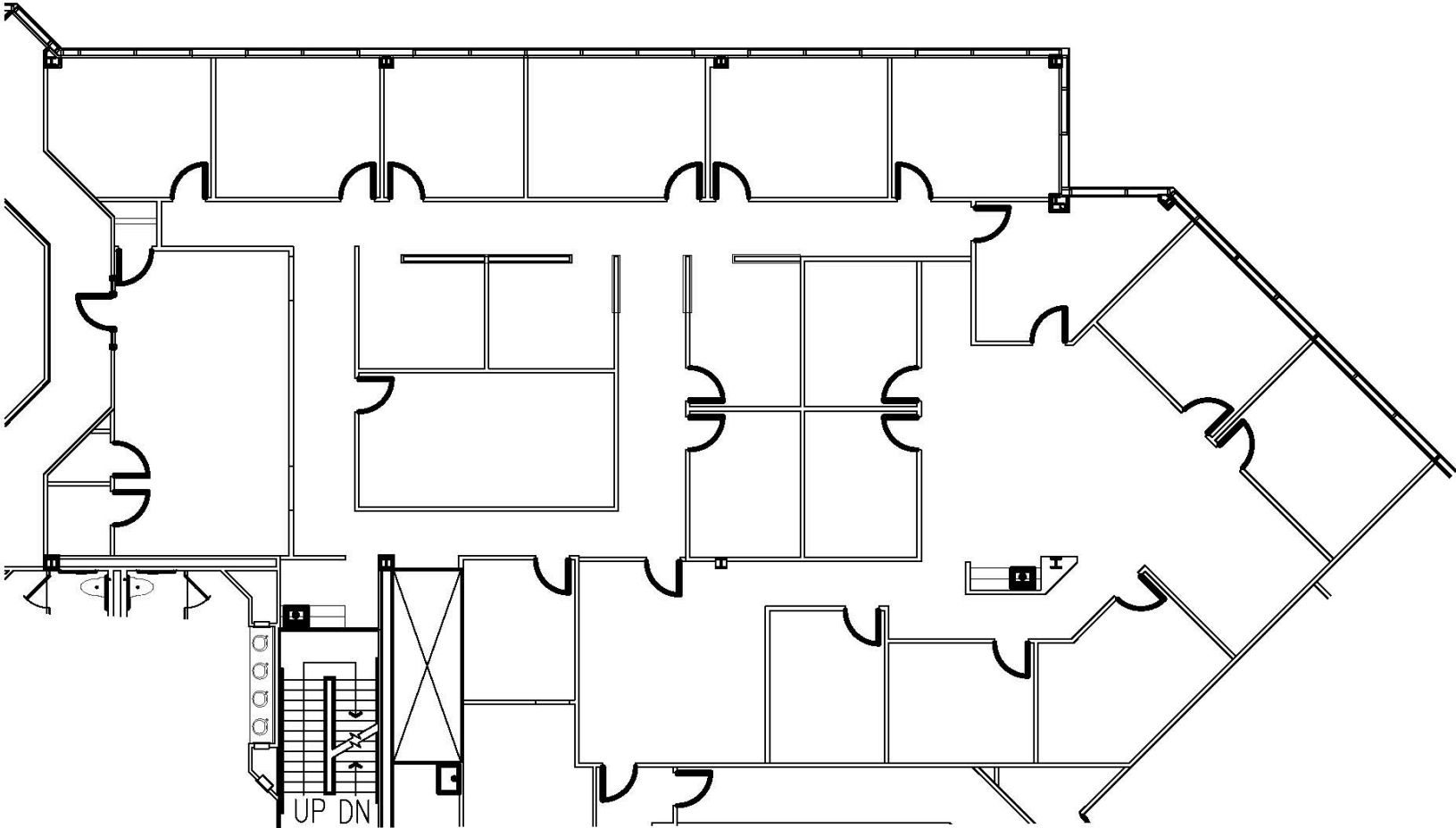
SECOND FLOOR



AVAILABLE SPACES

Suite 225 - 7,193 SF

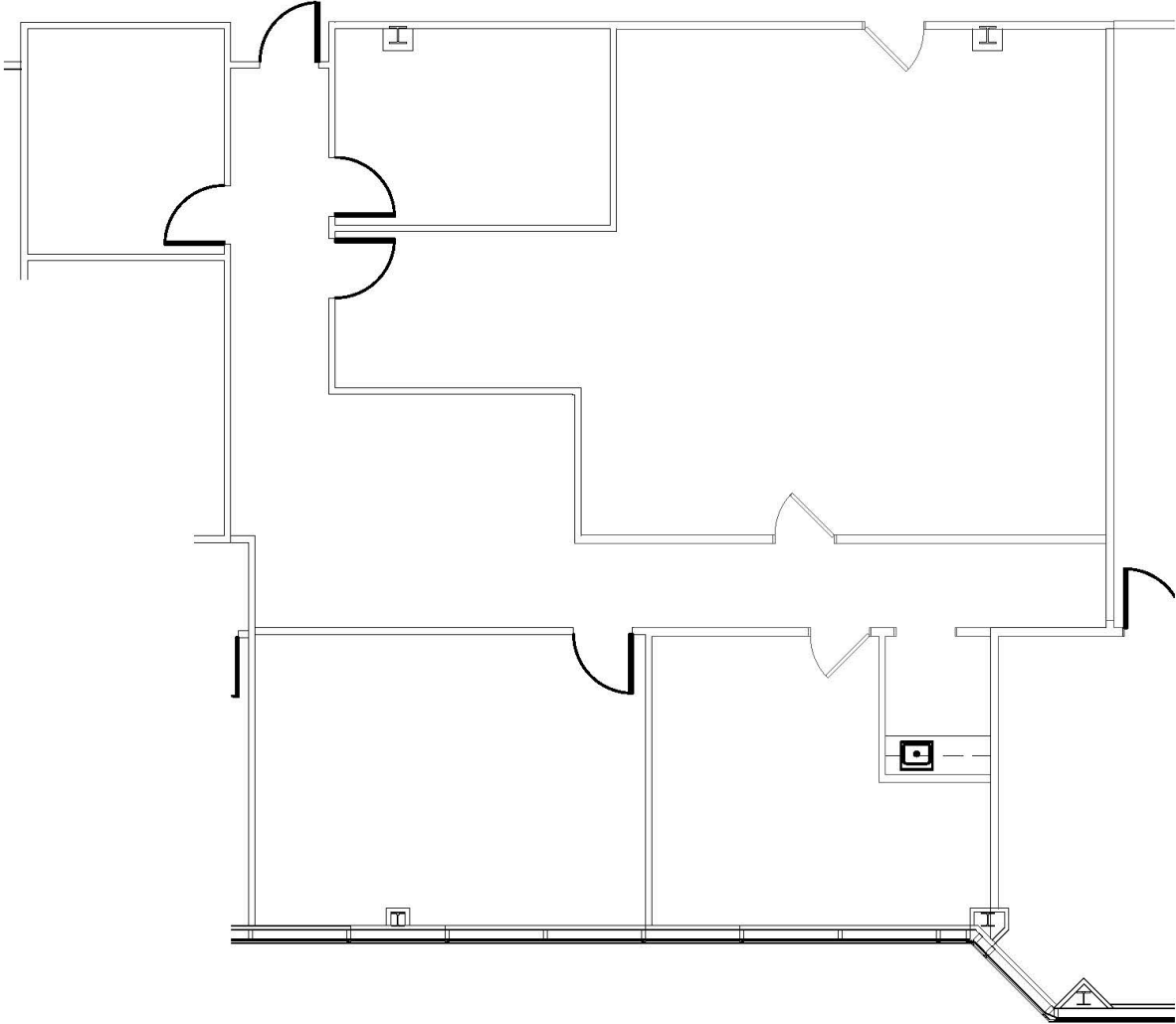
Available Now



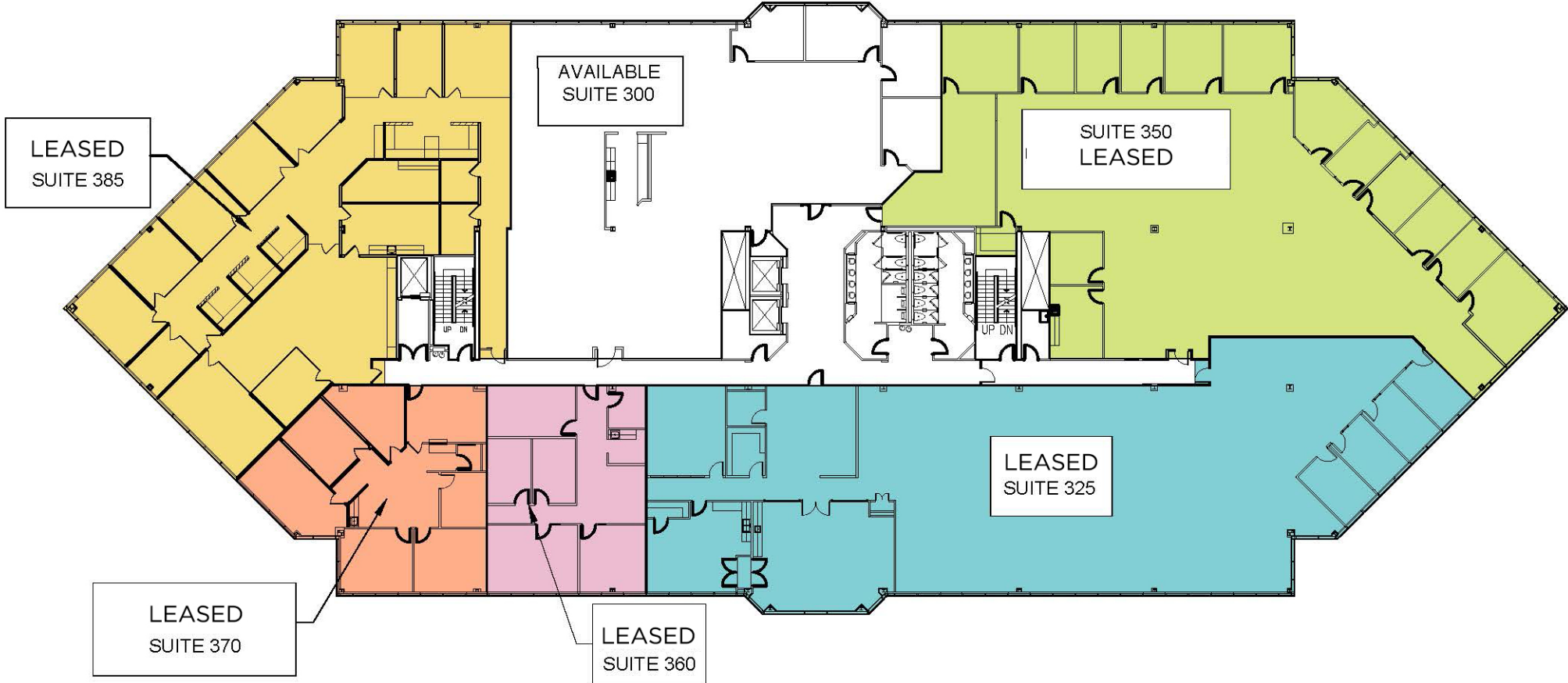
AVAILABLE SPACES

Suite 280 - 2,397 SF

Available Now



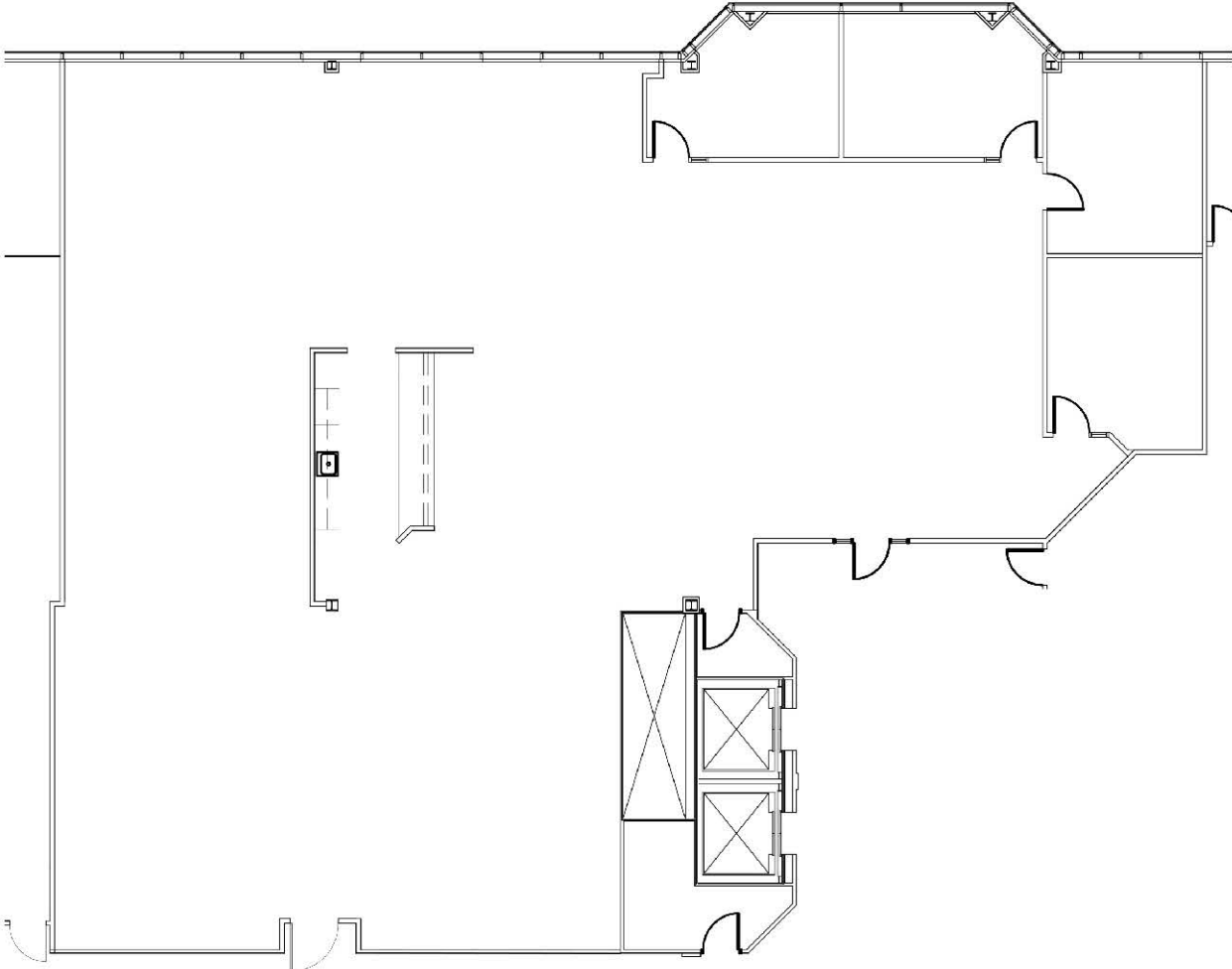
THIRD FLOOR



AVAILABLE SPACES

Suite 300 - 6,462 SF

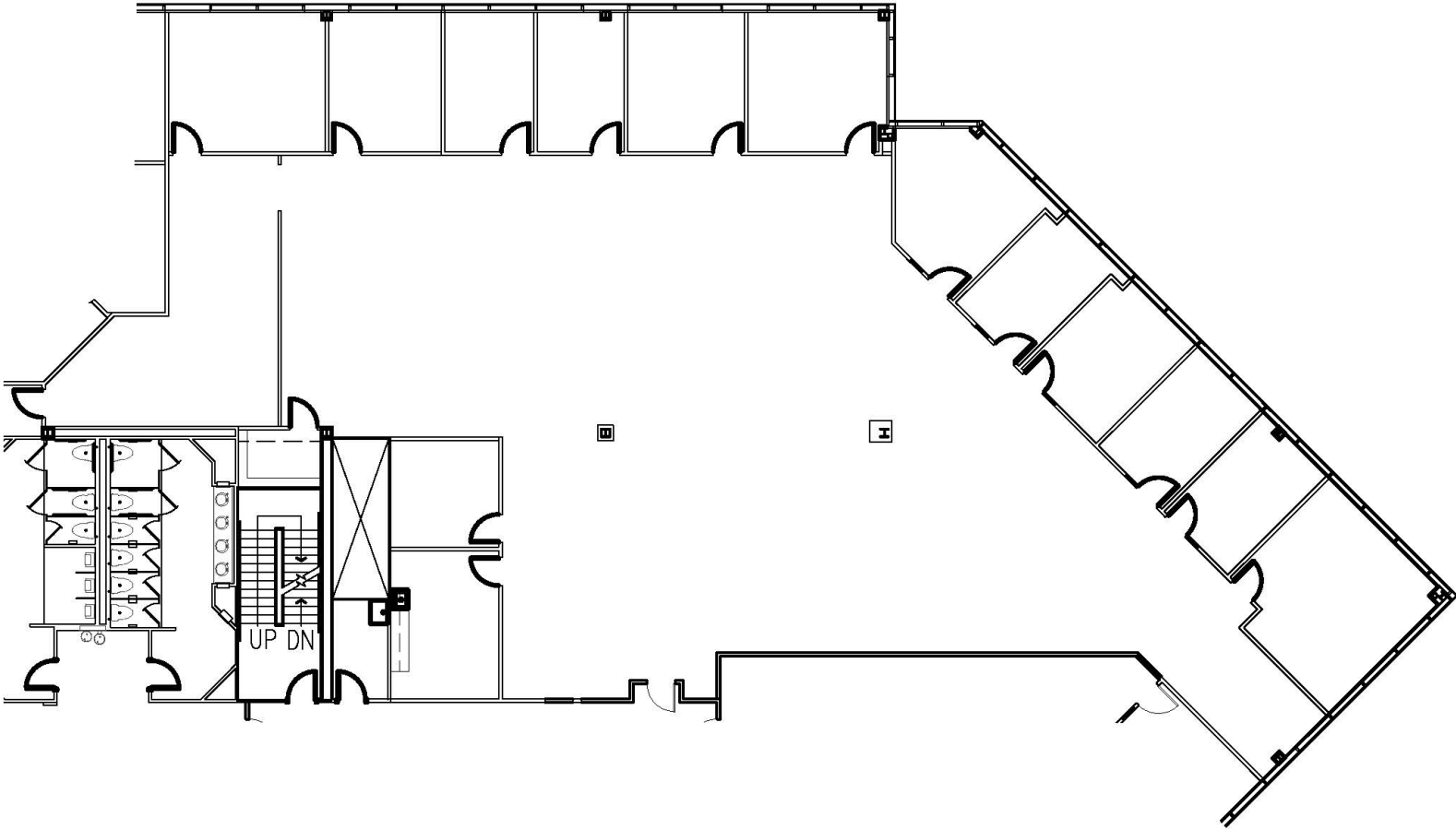
Available Now



AVAILABLE SPACES

Suite 350 - 8,718 SF

Available 1/1/2026





KRISTIE INGE
Senior Vice President
804 554 3563
kristie.inge@thalhimer.com

OWNED BY:



MANAGED AND LEASED BY:



Independently Owned and Operated / A Member of the Cushman & Wakefield Alliance

Cushman Wakefield | Thalhimer © 2025. No warranty or representation, express or implied, is made to the accuracy or completeness of the information contained herein, and same is submitted subject to errors, omissions, change of price, rental or other conditions, withdrawal without notice, and to any special listing conditions, imposed by the property owner(s). As applicable, we make no representation as to the condition of the property (or properties) in question.

OFFICE FOR LEASE
STONY POINT III

8730 STONY POINT PKWY
RICHMOND, VIRGINIA 23235



OWNED BY:



MANAGED AND LEASED BY:



UNDER NEW
OWNERSHIP

PROPERTY HIGHLIGHTS



ONE SUITE AVAILABLE



New Ownership, Same great quality and service



Amenities include a Take 5 Market and Spark Conference Center within the park



Walkable to Stony Point Fashion Park with 200K SF of retail and restaurant space



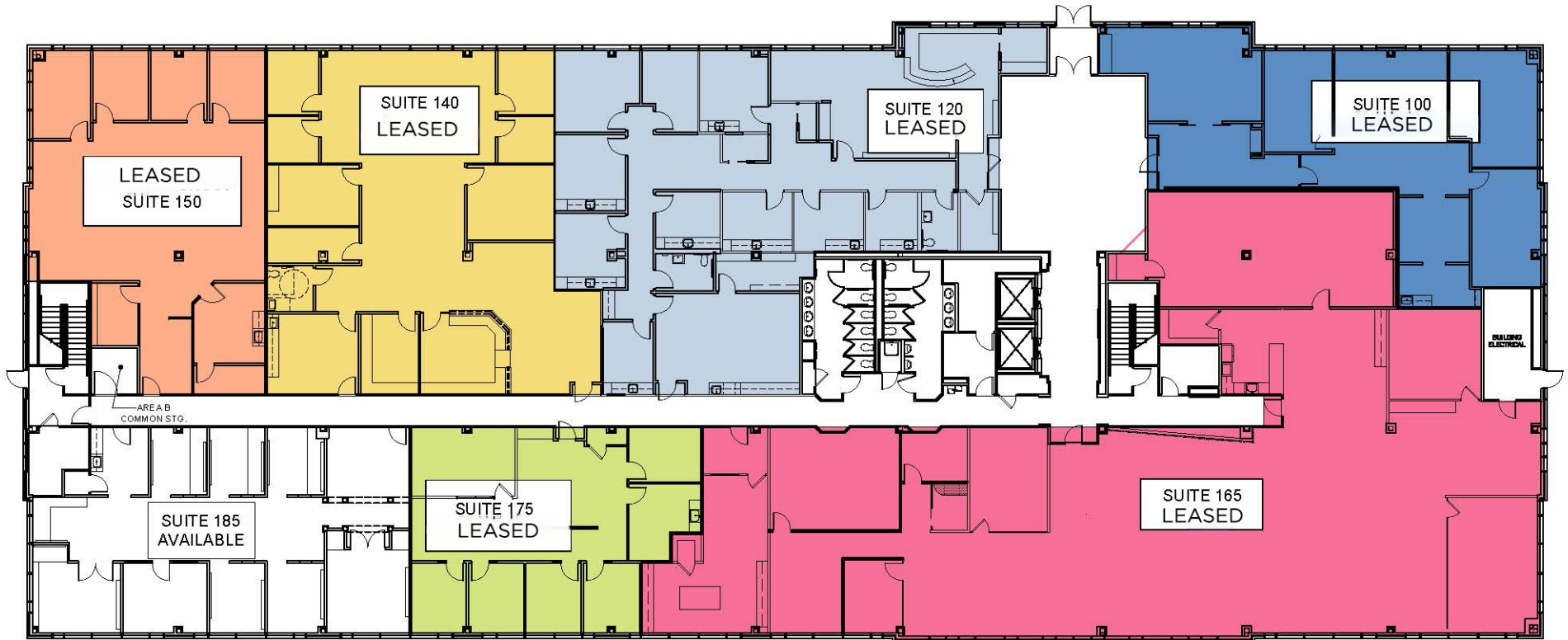
Direct access to the walking and biking trails connecting to the Larus Park system



Direct access to the Parham-Chippenham parkway



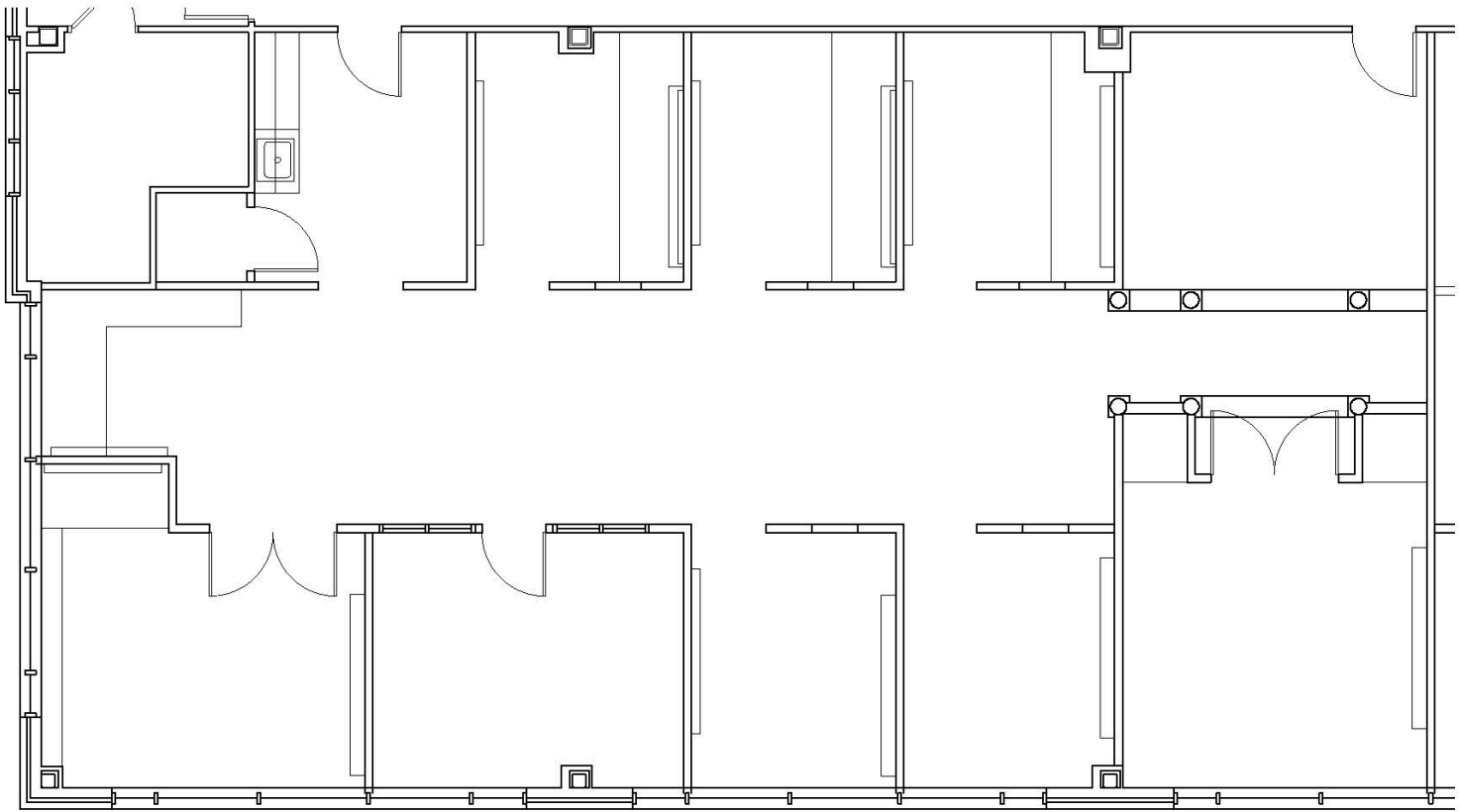
FIRST FLOOR



AVAILABLE SPACES

Suite 185 - 2,608 SF

Available Now





KRISTIE INGE
Senior Vice President
804 554 3563
kristie.inge@thalhimer.com

OWNED BY:



MANAGED AND LEASED BY:



Independently Owned and Operated / A Member of the Cushman & Wakefield Alliance

Cushman Wakefield | Thalhimer © 2025. No warranty or representation, express or implied, is made to the accuracy or completeness of the information contained herein, and same is submitted subject to errors, omissions, change of price, rental or other conditions, withdrawal without notice, and to any special listing conditions, imposed by the property owner(s). As applicable, we make no representation as to the condition of the property (or properties) in question.